

# WOLF VISIONS

Volume 29

THE PERIODIC NEWSLETTER FROM MISSION: WOLF



Lil' Hailey Star surveys the refuge from her snowy home (L. McGehee)

Mission: Wolf  
 PO Box 1211  
 Westcliffe, CO 81252

Nonprofit Org  
 US Postage Paid  
 Permit #63

## FEATURED WOLF

Hailey (pictured left) overcomes health issues and charms with grace and grit.

**THANK YOU**  
 Howls of gratitude for your continued support!

## Mission: Wolf

Mission: Wolf is a 501(c)(3) non-profit that connects people with nature using hands-on experiential education. Through volunteer internships and education programs, we inspire individuals to become stewards of the earth. While providing a home for rescued wolves and horses, we create opportunities for growth through community service and personal interactions with animals. We value education, sustainability, and improving relationships between people, animals, and the world around them.

## In This Issue

Sanctuary		<h3><i>Ydun Joins the Pack</i></h3> <p>Page 2</p>
Education	<h3><i>Wild Wolf Recovery In Colorado</i></h3> <p>Page 8-9</p>	
Sustainability		<h3><i>Inside the Growing Domes</i></h3> <p>Page 10</p>

## Table of Contents

- pg. 2 A New Decade of M:W, New Arrivals
- pg. 3 Featured Wolf, Senior Spotlights
- pg. 4 Remembering Abraham
- pg. 5 Memorials, Wolf-Horse
- pg. 6 Ambassador Update, Winter vs. Summer
- pg. 7 Greenhorn Wolf Profile, Jane's Studio
- pg. 8-9 Wild Wolf Recovery in Colorado
- pg. 10 Inside the Growing Domes
- pg. 11 Flora of M:W, Land Conservation
- pg. 12 Wish List, Financial Report
- pg. 13 Coloring Contest
- pg. 14 Acknowledgements
- pg. 15 Wolves of Mission: Wolf
- pg. 16 Visit & Contact Info

## 🐾 Sanctuary 🐾

Mission: Wolf is a 501(c)(3) non-profit that has provided a sanctuary home to wolves and wolf-dog crosses for over 30 years. Our mission is to inspire respect for the wild and connect people with nature. As people learn compassion for the wolf, they also learn to respect all forms of life, which leads to further protection and enhancement of wild habitat. M:W is run by a group of dedicated and hard-working individuals, who live and work sustainably in the remote Wet Mountains of Southern Colorado. Read on to learn more about the people and wolves of our sanctuary.

### A New Decade of Mission: Wolf

Who knew that what I started to write in early spring would be changed by a rapidly spreading virus? Who knew to care for a wolf would create a sustainable life of purpose and cooperation? Who knew that wild wolves create cascading environmental changes that would allow humans to flourish?

After 30 years of caring for captive-born wolf and wolf-dog rescues, all I know for certain is that life will change, and to accept change requires knowledge and action. I have watched the world shift from a cooperative society of working together for a common future, to a competitive society of hoarding wealth and resources.

Change is what we need; experience is the only solution. To deal with change requires we learn new ways.

It is the eye-to-eye experience that makes a difference. In 1988, we put the land in the wolves' names, set up a list of caretaking duties for people, and opened the place to anyone who could find us,

provided they did not place a burden on the wolves or facility. If wolves have to live in a cage, we provide them with a large, natural space and enriching interactions with their human caretakers if they so desire. I have allowed over a



*The shining gazes of Zephir (left) and Arrow (L. McGehee)*

million folks the chance to meet a wolf eye-to-eye, and it is this greeting that changes people. Every visitor has to step away from their challenges and be present to get a true greeting.

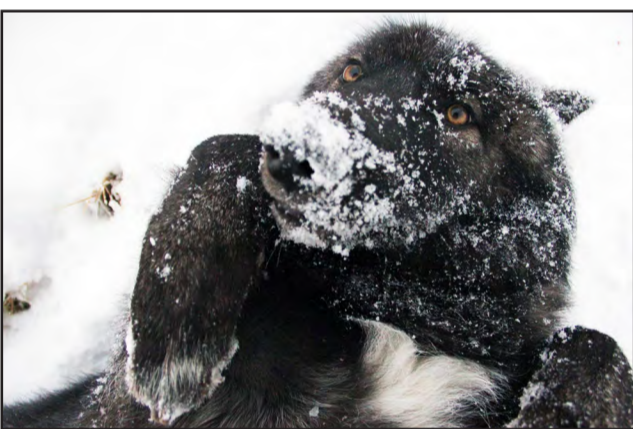
COVID-19 has opened a new chapter full of change. These obstacles are prime fuel to create a new norm: do we expand the

potential for world cooperation, or do we continue on a path of financially dictated chaos?

This time out has allowed the M:W staff to review, define, and focus on what really matters. We will work to grow

our land conservation project, improve our sustainability and food production, expand the wolves' enclosures, and provide as many one-on-one educational experiences that develop compassion and empathy. Our goal is to promote a greater understanding of behavior between people and animals that nurtures respect for all life.

The historic outcome of wolves and humans demonstrates the tragedy when fear overwhelms due to a lack of knowledge. A fearful human will justify killing; compassion, empathy and remorse do not exist in this world view. Change is the one and only constant that I know, and it has become daily life here at Mission: Wolf. -K. Weber



#### Ydun

In June 2019, we took in Ydun (pronounced E-den), a young wolf named after the Norse goddess of spring, rejuvenation, and youth. Her behavior perfectly fits her name, as she is eternally joyous and playful. All the staff took part in raising and socializing her, and she quickly became a highlight for visitors. She now lives with Zeab and Nashira in the Ambassador Pack. The trio's antics make an entertaining and educational experience for any visitor wishing to witness wolf pack dynamics. She is known for her exuberant greetings and boundless energy and is quickly learning from her elders how to behave like a wolf. She shows great potential for being a long-term ambassador and living a life of purpose through education. -M. Gaarde

*Photo by E. Alvarado*

### 🐾 New Arrivals 🐾



#### Doeschka

Doeschka has come to us all the way from Alberta, Canada! She is turning three this year and we are excited to start saddle training and gently riding her this summer. Horse bones and joints do not fully develop until they are six to eight years old, when they are considered adults. Riding Doeschka sooner could cause her back or legs permanent damage, as is the case in most baby horses. In the meantime, we are sharpening our groundwork skills, and sharing what we learn along the way! Welcome Doeschka, we are over the MOON to have you and love you dearly already! -TAB

*Photo by TAB*



#### Merlin

Merlin is a 12-year-old female who came to us when the Rocky Mountain Wildlife Foundation unfortunately had to close. She is a very shy and beautiful wolf-dog who has never been handled by people and so was unsuitable for life in any place besides a sanctuary. It took several attempts and many days to even get her comfortable enough with our staff to come out of her den for transport! On the night of March 12th, 2020, our staff was able to successfully crate and transfer her peacefully to her new home. We are so thrilled to have this newest addition to our pack with us and look forward to getting to know this magnificent older wolf.

-L. McGehee

*Photo by K. Wilson*

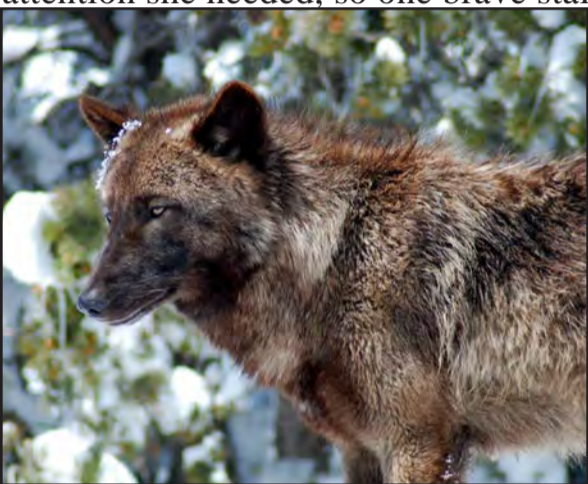
## 🐾 Featured Wolf: Lil' Hailey Star 🐾

Hailey is quiet, intense, and commands attention whenever she agrees to be seen. Her brindle coloration perfectly masks her as a rock; it is only with the errant twitching tail while she dreams that her camouflage is revealed. Her life has been marked by miraculous medical recoveries, a lifelong



*Yearling Hailey (TAB)*

partnership with Aria, and a charming grace that captures the hearts of everyone who gets the chance to spot her. Hailey came to M:W in 2009 from Bear Country, South Dakota along with seven other littermates. As the runt of the litter, she was picked on by her siblings and sustained serious injuries. Nobody could get her to come out of her den for the medical attention she needed, so one brave staff member named Hailey



*Hailey glistens in the snow (TAB)*

volunteered to crawl 15 feet into the den with a rope tied around her ankles to rescue the injured pup. Lil' Hailey Star became the first and only wolf to be named in honor of a staff member.

It was when wolf pup Hailey was in the vet building recovering

that she bonded intensely with the gentle Arctic wolf who would become her lifelong mate: Aria, who had contracted parvovirus and nearly lost his life. The two healed together and formed a companionship that still shines strongly today, eleven years later.

At the end of summer 2019, staff began to notice decreased mobility as Hailey tried to move around her enclosure. Her caretakers decided she needed medical attention. Through body posture and mirroring techniques, staff were able to move her safely into an accessible part of her enclosure to be put on a stretcher and taken to a van, completely avoiding the danger of tranquilizing. At Powers Pet Emergency, an examination yielded that she likely had a tumor growing in her spine that was affecting her coordination, muscle movements, and sensory feedback.

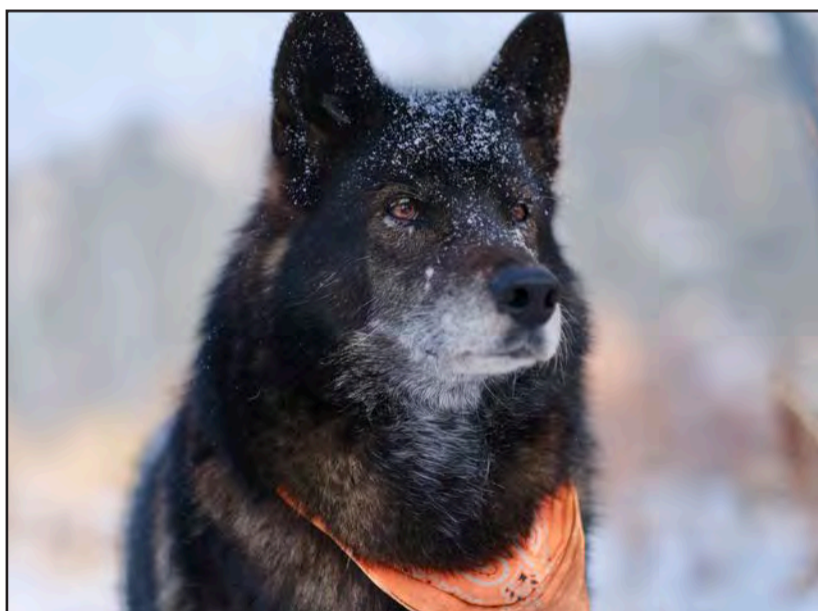
Hailey was prescribed steroids to help reduce the tumor size and has since been able to reclaim her mobility and quality of life. She can once again be seen running across her enclosure with sure-footing and stealing bones from Aria when he is not looking. It has been astounding to see the rich and vibrant life Hailey has been able to lead through timely medical care and a safe home. Her tenacity and joy each day remind us all to cherish the beautiful and unexpected adventures we are able to experience. -L. McGehee



*Hailey (left) sleeps next to her partner Aria (A. White)*

## 🐾 Senior Spotlights 🐾

### Talon



*Talon wears a bandana on walks (E. Matsuda)*

Talon, also known as Timber, is one of our most social and outgoing wolf-dogs. For many years, Talon lived in the lower part of the refuge with his partner Valley Spirit and adopted daughter Asia. As he grew older, he started to experience age-related health problems. In the beginning of summer 2019, his symptoms became more severe and staff decided to move him to the enclosure by the staff kitchen for closer observation. After sustaining seizures, he was rushed to Belcrest Animal Hospital and transferred to Powers Pet Emergency for further testing. Although there was no specific diagnosis found, staff began a six-month seizure treatment through a combination of medication, diet change, and exercise. He has now been weaned off to a lower dosage and has regained much of his quality of life. Talon enjoys interacting closely with the staff, long walks with his buddy Minigan, and special meals delivered to him personally. -T. LePore

### Soleil



*Soleil rests during the afternoon (E. Matsuda)*

Soleil's story is one of the most captivating illustrations of the difficulties of keeping a wolf-dog as a pet, and she has been a dynamic part of the refuge for most of her life. Arriving at the sanctuary when she was just seven months old, she began educating people about the best means of interacting with a fearful canine. She has taught us all so much about bodily communication and continues to do so. At the impressive age of fifteen, Soleil is the Sassy Silver Snow Queen with an unmatched personality: she can be either reserved or outgoing depending on her mood. Her transcendent howl regularly enchants all who are lucky enough to hear her. Everyone who has seen her on the hillside of her enclosure adores her demeanor and radiance. We are all very honored to be a part of caring for Soleil throughout her golden years. -T. LePore

# Memorials

## Abraham

2007-2019



Yearling Abe (E. Snell)



Abe on tour at Lake Erie (M:W Archives)



Kent & Abe on tour (M:W Archives)



Abe with Magpie (TAB)

A young and gangly canine with long legs, a narrow chest, and an oversized head gallops down the busy streets of Salt Lake City, Utah. It is the summer of 2007 and this four-month-old puppy gazes with amber eyes at the chaotic city around him. But before he can test his self-sufficiency for too long, he is taken into a shelter where he is labeled a wolf-dog. He is curious and social with just about everyone he encounters, but he is scheduled to be euthanized due to his wolf-dog classification. At the very last moment, a husky rescue steps in and helps to transfer the puppy, soon to be known as Abraham, to Mission: Wolf.

Abraham will spend the next twelve years of his life falling deeply in love with his life partner Magpie, raising many adopted wolf puppies, traveling the country on the Wolfhound tour bus, and educating hundreds of thousands of eager humans.

Abe arrived at the refuge on July 9th, 2007; his gregarious and sweet nature was immediately clear as he introduced himself to everyone he encountered. After acclimating to the refuge, he joined lead ambassador Magpie and the two quickly bonded. Their relationship was one of mutual respect and kindness. Together they spearheaded the ambassador education program across the country and on-site at Mission: Wolf, all while building a supportive and grounded family unit with any adopted puppies who needed to learn how to be wolves.

By the time Abraham reached a year old, he had grown into his huge paws

and massive head. The staff started to question just how much wolf he had in him. At two years old, Abraham looked more like a husky than any of



Abe (right) and his partner Magpie in the sunshine (K. Weber)

the wolves he was living alongside. His appearance combined with his passion for eternal belly scratches led



Young Abe on tour (J. Kolbrunner)

staff to wonder if Abraham had any wolf in him at all. Luckily, wolf is in the eye of the beholder; Abe reigned as the paternal leader of the Ambassador

Pack through each successive iteration of new puppy arrivals. Even when his adopted children outgrew him by the time they reached six months, he guided with a firm but loving growl and the goofiest of warbling howls. He earned his nickname "Sheriff Abe" due to his impressive ability to keep even the most rambunctious of wolf puppies in line.

For seven busy years, Abraham met people from coast to coast while embarking on adventures of his own with his life partner by his side. In 2015, he and Magpie retired from touring and continued to educate on-site with behavioral programs. After

Magpie's passing in 2017, Abraham lived with his adopted son Zeab and his newest adopted puppy Nashira. The three entertained visitors endlessly with their playful antics and made excellent teachers on the differences between wolves, dogs, and wolf-dogs. Abraham battled cancer for several years before ultimately passing away peacefully in the summer of 2019.

His no-nonsense leadership, award-winning howl, and floppy-tongue grin will be remembered by all who had the pleasure of meeting him. Although Abe is gone from the refuge, Zeab and Nashira still lead the on-site education program, continuing the legacy he helped forge. The refuge has never seen such a charismatic teacher; Sheriff Abe, you were truly one of a kind, and we are at peace knowing you and Magpie can once again spend your days side-by-side. -L. McGehee



Abe surveys his domain (M:W Archives)



Abe rules the pack (TAB)



Abe gallops at Lake Erie (M:W Archives)



Sheriff Abe (M:W Archives)

## 🐾 Memorials 🐾



### Amulet

2007-2019

Amulet was a feisty and fiery wolf-dog known to bound down the hillside each morning for her breakfast. She lived with her partner Batman in the lower half of the refuge, and the two showed us all that opposites really do attract: Batman was calm and quiet, whereas Amulet was energetic and self-assured. Amulet will always be remembered for her vibrant spirit and spunky runs at feeding time.



### Luna

2017-2019

When an animal dies young, and especially unexpectedly, it can be devastating; such is the case with Luna. It took many years to realize the dream of caring for a Fresian horse like Luna, and then she was gone in a year. She was such an amazing soul who was full of life, and she inspired many people in her short time with us. Rest In Peace, dear Elissa Luna! You are loved!



### Chiquita

2004-2020

Tracy inherited her mother's chihuahas in 2017. Chiquita, the elder of the two, had been depressed for several years. Once she arrived at the farm house at Mission: Wolf, Chiquita blossomed in her large dog yard. She recognized that she could play, run, and enjoy life without fear. She became like a puppy again in the last few years of her life. She was dearly loved, and will be missed.

## Wolf-Horse Tammen

1999-2020



Tammen came to us when he was seven years old. He was a full-blooded Egyptian Arabian horse. All horses are special, but this ancient horse breed has something hard to quantify: it's as if one can reach out and touch a piece of history. It feels like a closer connection to our ancestors, like we are standing right there with them at the time they walked the earth, forging our futures with horses by our side, underneath us, or out in front of us.

The generous spirit of horses is largely responsible for the success of humanity today. Breeders continuing ancient horse

breeds work hard to retain the original bloodlines; their honor and pride in their work is clear. Arabian horse blood runs through the veins of most of our modern breeds, serving to strengthen and give grace where needed.

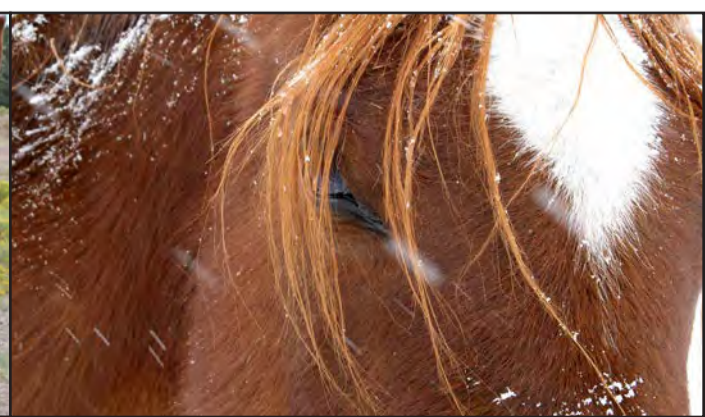
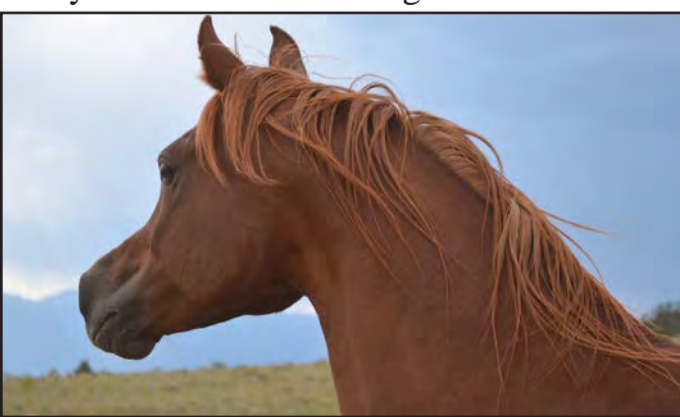
Tammen brought the term "Wolf-Horse" to mind. On the day he arrived at the barn, it was apparent how different he was from the other horses we had at the time: none were as inquisitive towards people as Tammen. He was often interested in hanging out with the people more than the other horses. It wasn't long before we discovered how intuitive he was, similar to the wolves we cared for. Soon he became the star teacher in the horse herd. He was one of the kindest and most generous horses. Tammen had the patience of a saint when it came to helping people learn about horses; anyone could handle him, and he loved being a teacher.

During wolf talks, Kent points out the narrow chest of the wolf, with long legs that are built to run and turn corners



quickly. Tammen's chest was similarly narrow, and he was just as agile and sure-footed. Wolves could travel long distances, and Arabian horses are known endurance champions. Tammen also shared a wilder sense of spirit, like the roaming, playful wolves. Tammen was exciting to be around and brought a sense of joy to those first learning about horses. He graciously shared himself with hundreds of people over the 14 years that we were grateful and blessed to have had him. Run free, we love you!

-TAB, Photos by TAB



# Education

Mission: Wolf offers educational tours of our facilities to visitors and volunteers, as well as more comprehensive experiential programs for schools, universities, youth groups, treatment centers, and environmental organizations. We strive to present the most up-to-date scientific information about wolves and the vital role they play as a keystone species. However, our most important task as educators is to facilitate positive experiences between animals and humans. The wolves are the true educators at the sanctuary. No amount of research, no lecture, book, or film, can do justice to the feeling of looking into the piercing, contemplative golden eyes of a wolf. The wolves teach us to be more aware of our bodies, minds, and emotions. Our ultimate goal is to put ourselves out of business; we hope one day no more captive wolves will need sanctuary, and we can listen to them howl in the wild. In the meantime, we want to create a space that allows people to restore, or even establish, a connection with nature.

## 🐾 Ambassador Update 🐾



*Ydun thrives in the Colorado winter (L. McGehee)*

Since November of 2019, visitors have had the uncommon opportunity to witness the formation of a wolf pack, complete with all the wild antics of any sitcom family. Abraham, the beloved pack leader, passed away in September of 2019. Zeab, Abraham's adopted son, mourned and lost confidence. As he struggled to cope with the loss of Abe, he began to notice fuzzy ears and inquisitive eyes across the refuge. Rambunctious puppy Ydun could just

barely climb to the top of the shade structure in her enclosure, but each time she scaled it she could stretch to see the striking, distinguished elder wolf who stared back from the ambassador enclosure. The Mission:Wolf staff joked, "Zeab knows he's getting that puppy."

Ydun was introduced to Zeab and two-year-old ambassador Nashira in November of 2019. Her eager confidence helped her step into the ambassador role, but irked her new mom. Nashira was challenged by her sudden promotion from baby-of-the-pack to mother.

Wide-eyed visitors watched Ydun and Nashira tumble over each other as they learned to navigate their new relationship. Like the visitors, Zeab looked on from afar. When a too-eager Ydun barreled into him as he greeted visitors, he trotted off in exasperation rather than choose conflict. One frigid

winter day when Ydun crashed into him, Zeab whipped around and bared his teeth, letting out a loud growl. She hit the ground and twisted to expose her belly, whining her submission. Kent interpreted for the visitors that Zeab was regaining his confidence and learning how to be a pack leader for the first time





*Ydun meets Zeab and Nashira (K. Weber)*

in his nine years. The future of Mission: Wolf's education looks bright as the pack delights in meeting and teaching visitors. -C. Potts

## 🐾 A Day in the Life of a M:W Educator 🐾

Summer 2019 was another busy, productive, and hot few months for all involved! From May through September, Mission: Wolf hosted 43 volunteer groups. The following winter has given us snow storms and impassable dirt roads, which means daily responsibilities change quite a bit. There is no typical day in the life of a Mission: Wolf staff member, but read on to find out what the different seasons might bring to our small eco-village home.

	Summer	Winter
		
7:30am	Begin wolf breakfast prep under shining sun	Shovel out six fresh inches of snow
8:00am	Feed out fresh, raw meat to entire pack	Feed out fresh, raw meat to entire pack
8:30am	Human breakfast in the kitchen with fourteen other staff	Human breakfast with lots of tea and coffee to warm up
9:00am	Play hacky sack with volunteer group of 15 teenagers while planning day's projects	Process holiday season donations and write thank you letters to membership base
12:00pm	Lunch break after a morning of processing firewood	Lunch break after a morning of office work
12:45pm	Set group up on an afternoon project, give a tour to visitors	Schedule groups for the following summer by email
2:00pm	Discuss sustainable living strategies with volunteer group	Sort through photos, order new metal prints
2:45pm	Facilitate a wolf visit with Kent and the Ambassadors	Start a fire as sun dips lower and chill settles in
4:00pm	Part with volunteer group, catch up on office work	Revise and edit latest M:W newsletter
5:00pm	Walk resident wolf-dogs over rolling ridgelines	Feed resident wolf-dogs dinner while sheltering from cold
5:30pm	Show around unexpected visitor(s) who arrive after hours	Eat community dinner before sun sets, plan for next day
7:00pm	Community dinner as signaled by ringing gong	Retire to living space as snow begins to fall
8:30pm	Hang out with community around the campfire, eating s'mores brought by the most recent Boy Scout troop	Fall asleep, cozy and warm while the fire rages
9:30pm	Reluctantly disperse for bed as the last light drains from the sky	Briefly wake up as the wolves let out one last howl for the night

# The Greenhorn Wolf

## *The Story of the Last Wild Wolf in the Wet Mountain Valley*

The day after Christmas, 1923 was the last day a wild wolf freely roamed the Wet Mountain Valley range. In the rolling hills of scraggly aspen and protruding scrub brush that Mission: Wolf now calls home, a singular, shadowy figure left three-toed paw prints in the fresh winter snow as she stalked a rabbit. She was called "The Greenhorn Wolf" in honor of the peak that was part of her expansive territory. After the dispersal and death of her pack in 1915 due to increased hunting efforts, she survived for eight more years as a lone wolf, outsmarting her human pursuers and reaching the astounding age of eighteen.

Most of the published accounts of The Greenhorn Wolf focus on her demise: those last few weeks where local trappers pursued her through the pine and aspen forests she called home. Famed wolf trapper Bill Caywood was called in from out of town to finish the job, and after several unsuccessful attempts he was finally able to poison her with a piece of laced meat left for the magpies. But what is much more significant is her life, and what she came to represent as one of the

last wild wolves in Colorado.

The Greenhorn Wolf was smart. She had to be; the life of a lone wolf is hard enough without human hunters pursuing her at each turn. She learned from the death of her pack and knew to stay far, far away from people. She skirted around major cities like Walsenburg in favor of the wooded mountains and dusty valleys she knew as home. She was also a survivor: she sustained a bullet and escaped. She was caught not once but twice in steel-jawed traps and managed to evade capture each time, only leaving a toe behind. She encountered meat laced with strychnine and managed to vomit it up before the deadly substance took hold, and from then on, she knew to avoid the carcasses with that sickly sweet smell. She ranged from the base of the Wet Mountains through the expansive valley, along the Eastern side of the Sangres. She traveled as far as she needed to in order to find prey, primarily subsisting on antelope. The Greenhorn Wolf is a true emblem of survival and ingenuity in the face of persecution. For eight long, beautiful, challenging, and truly wild years, this creature not only survived,

but thrived. Wolves only live six to eight years on average in the wild. She tripled her life expectancy in the time of greatest danger to a wild wolf. What could be more demonstrative of the human spirit than this bravery, courage, and diligent hard work in the face of such overwhelming odds.

Although a few wolves were caught and killed in the following years along the state borders, The Greenhorn Wolf is widely thought of as the last wolf in Colorado, until now. In early 2020, Colorado Parks and Wildlife confirmed sighting of a wild wolf pack on the Northwestern border of Colorado. A reintroduction program will also be on the ballot for Coloradoans in 2020. The chapter that closed with The Greenhorn Wolf can once again be opened.

Humans are different now, but also, of course, fundamentally the same. As the people of this state and country navigate the murky waters of coexistence with wild animals, we can look to The Greenhorn Wolf to see just how incredible these creatures can be when they are allowed to live free and wild.

-L. McGehee (illustration by J. Goodman)

## Jane's Studio Ushers in New Era

One year ago, Mission: Wolf staff and volunteers were battling heavy snow and high winds to enclose Jane's Studio; this year we are lucky enough to find ourselves working in a warm interior space, complete with radiant floor heating and a solar-powered electrical system. Once completed, Jane's Studio will be a fully solar-powered agricultural studio and workspace that will allow Mission: Wolf to accommodate increased visitor traffic and expand our educational objectives. The need for this studio springs from thirty years of working in bitter mountain conditions,



*Jane's Studio in the snow (K. Weber)*

and the enclosed workshop will enable staff to operate comfortably and efficiently for the next thirty years. In the last few colder and calmer winter months, staff have found themselves learning how to acid stain concrete floors, caulking window spaces, staining doors, cutting and packing insulation, installing drywall, and enjoying the sweet sounds of the fully functional audio system. Each day sees improvements in this beautiful new space, and we are looking forward to another busy summer of construction. Mission: Wolf was created for the wolves, but has always been a haven for the people, too. As social media and the Internet make the refuge more accessible than ever before, Jane's

Studio becomes increasingly essential to furthering our mission of education to all who are interested, while maintaining a peaceful sanctuary home for the rescued wolves and wolf-dogs.

Jane's Studio will give us the space and resources to maintain and improve the sanctuary while also providing uninterrupted educational programs, classes, and tours to all who are interested.

We are nearing the homestretch of this new improvement to the sanctuary but need your help to finish! For more information on how you can help us realize this dream, check out our wishlist on page 12 or contact us directly at [info@missionwolf.org](mailto:info@missionwolf.org) or 719-859-2157.



*Heavy snow means intensive snow removal! (TAB)*



*Top floor in preparation for concrete floor stain*

# WILD WOLF RECOVERY

## How can wolves return to Colorado?

- There are two ways of returning to previously inhabited land: recolonization and reintroduction
- Recolonization means that wolves naturally migrate to the land
- Reintroduction means that wolves return through the work of humans
- In both scenarios, wolves can dramatically reinvigorate struggling ecosystems
- Reintroduction comes with many associated political conflicts and concerns
- Colorado will be voting on a reintroduction program on the 2020 ballot

## What is on the ballot?

The wolf reintroduction initiative would direct Colorado Parks and Wildlife (CPW) to make a plan for reintroducing and managing wolf populations in western Colorado. CPW would also be required to work with livestock owners to reduce conflict and pay for any livestock lost to wolves. *Source: Colorado Gray Wolf Reintroduction Initiative (2020). Ballotpedia.*

## Are wolves already here?

- In early 2020, CPW announced that a pack of wolves was spotted on the Northwestern border of Colorado for the first time since the 1930s
- While this does confirm that Colorado has habitat suitable for wolves, this six member pack faces many obstacles, such as human settlements and highways
- Reintroduction of wolves from other genetic lines will reduce the risk of inbreeding and make the population as a whole more viable
- Researchers hope that a healthy wolf population in Colorado will create a “genetic corridor” between isolated populations

*Source: Colorado Parks & Wildlife officers confirm latest wolf pack sighting in NW Colorado (2020). CPW News Release.*

## What happened in Yellowstone?

- Wolves chased elk and deer, causing them to aerate the soil and move away from water sources
- New trees sprouted in the freshly aerated soil, stabilizing water sources and allowing the different layers of the tree canopy to be restored
- Songbirds returned to the different layers of the canopy
- The canopy shaded the water sources, allowing fish to return to the significantly cooler streams
- Wolves outcompeted coyotes, allowing mice, rabbits, and other small game to repopulate
- Lynx, bobcats, and birds of prey returned as small prey returned

Most Colorado forests have very large trees and very small trees; overpopulated elk and deer have erased our middle canopy by eating saplings over several decades. With the return of the wolf to Colorado, we may see the same cascading changes in biodiversity that we saw with the Yellowstone wolf reintroduction.

## Will wolves take the food meant for humans?

- Wolves and humans both eat elk and deer
- Hunting is a vibrant portion of Colorado’s economy
- Colorado’s herbivores are overpopulated
- CPW culled elk each year until 2011, and although elk populations are more normalized now, deer are again becoming an increasing issue
- Wolves would naturally reduce deer populations and reduce resources humans must spend to control deer populations
- Humans and wolves have very different hunting patterns: humans prize the largest animals, while wolves hunt the young, old, and sick
- In Yellowstone, elk populations decreased after wolf reintroduction in 1995, but the elk that remained were larger, stronger, and healthier—exactly what hunters are looking for

## Are wolves dangerous?

- Wolves are afraid of people and rarely aggressive
- Since 1900 there has been only one fatal attack by a wild wolf in the US
- By comparison:
  - Household dogs kill about 40 Americans annually
  - In 2018, cows killed 27 people and 190 people died in collisions with deer

*Sources:*

*Census of Fatal Occupational Injuries by Event or Exposure (2018). U.S. Bureau of Labor Statistics. Collisions with Fixed Objects or Animals (2018). Insurance Institute for Highway Safety. Maniscalco, K., & Edens, M. A. (2018). Bites, Animal. In StatPearls. StatPearls Publishing. McNay, M. E., & Hicks, M. V. (2002). A case history of wolf-human encounters in Alaska and Canada. Alaska Department of Fish and Game. Butler, L., B. Dale, K. Beckmen, and S. Farley. 2011. Findings Related to the March 2010 Fatal Wolf Attack near Chignik Lake, Alaska. Wildlife Special Publication, ADF&G/DWC/WSP-2011-2. Palmer, Alaska.*

## Are wolves a threat to our land and livestock?

- This plan stipulates wolves will be reintroduced west of the Continental Divide, in areas with plentiful public lands and far from major cities
- According to the USDA, over 3.5 million cattle died unintentionally in 2015
  - Less than 8% of these deaths were due to predators
  - Only 0.2% suspected losses due to wolves
- Cows are 48 times more likely to die giving birth than getting attacked by a wolf
- Proposed ballot measure requires that CPW compensates ranchers for livestock lost to wolves

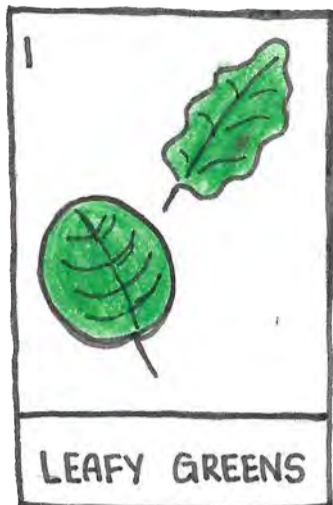


# Sustainability

The sanctuary is designed to keep our environmental impact minimal while we work to become as self-sufficient as possible. We continually strive to improve our sustainability efforts while educating visitors about resource conservation, gardening, sustainable building design, renewable energy, and recycling.

## Inside the Growing Domes

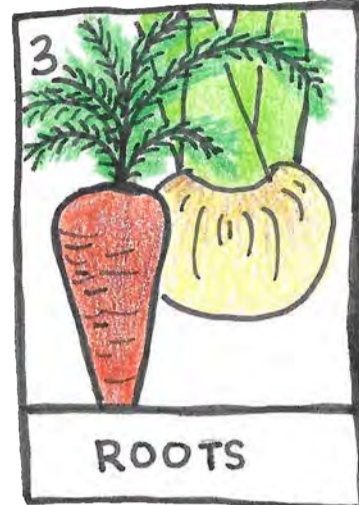
At Mission: Wolf, we have two large greenhouses that give staff access to fresh, healthy produce year-round. These growing domes are expertly designed to allow us to garden in our high-desert alpine environment. Read on to find out more about what we grow.



- Flourish in enriched soil
- Sweeter in cold winter months
- Absorb nitrogen in the soil



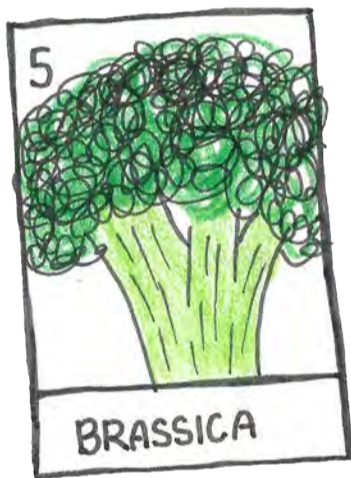
- Create larger tubers in low-nitrogen soil
- Break up soil from leafy greens



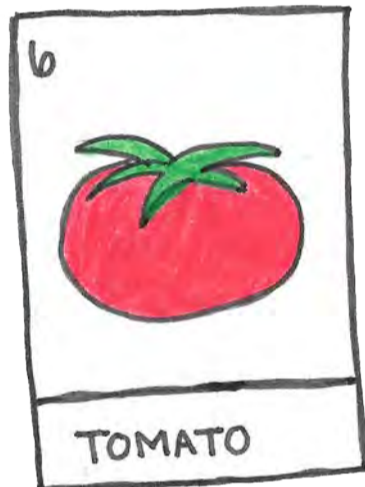
- Require very little nitrogen
- Thrive in loose soil aerated by sweet potatoes



- Great soil builders
- Squash, beans, and corn work together to survive



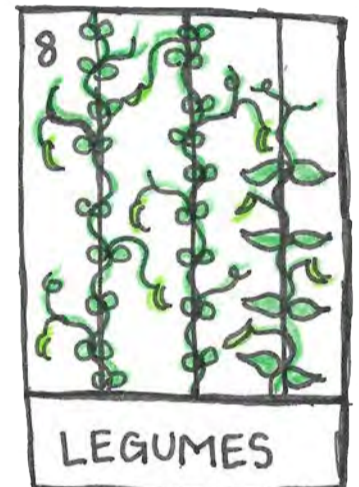
- Love the rich soil from 3 sisters
- Brassicas take up above ground space
- Onions spread below ground and repel pests



- Thrive in rich soil left by brassicas and onions



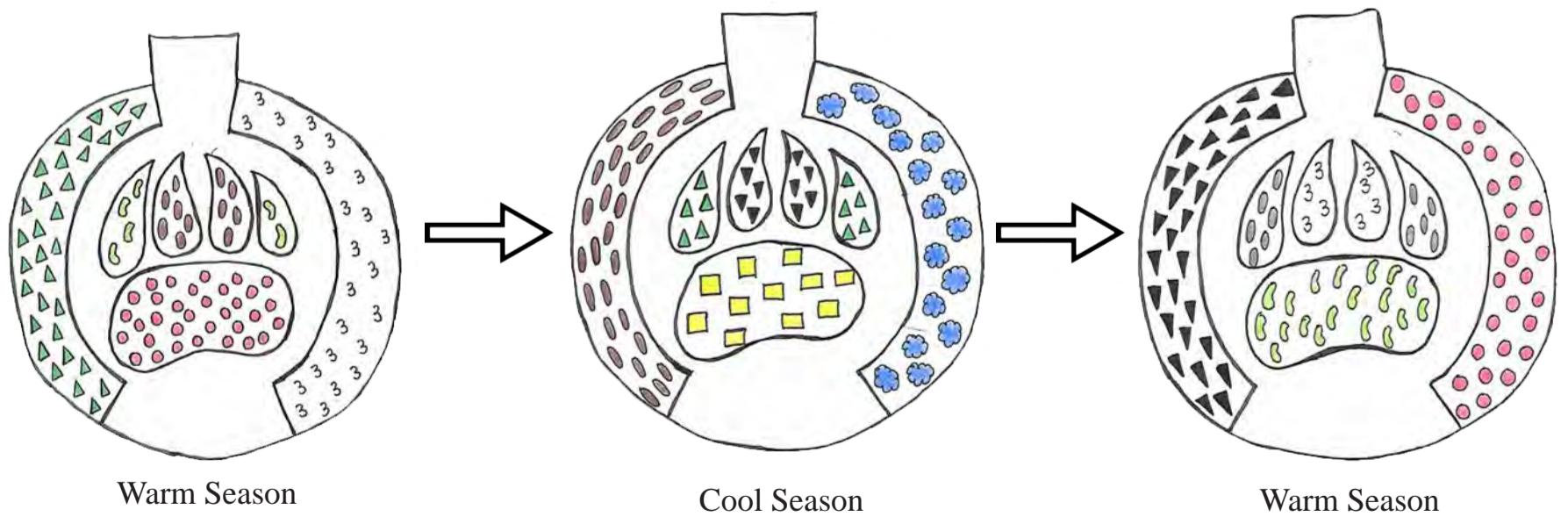
- Become sweeter with colder nights
- Harvested in fall, but can store through winter



- Add nitrogen and restore soil

## Crop Rotation

Every plant uses different nutrients and attracts and repels different insects, so we rotate our crops to make our domes as productive as possible.



Warm Season

Cool Season

Warm Season

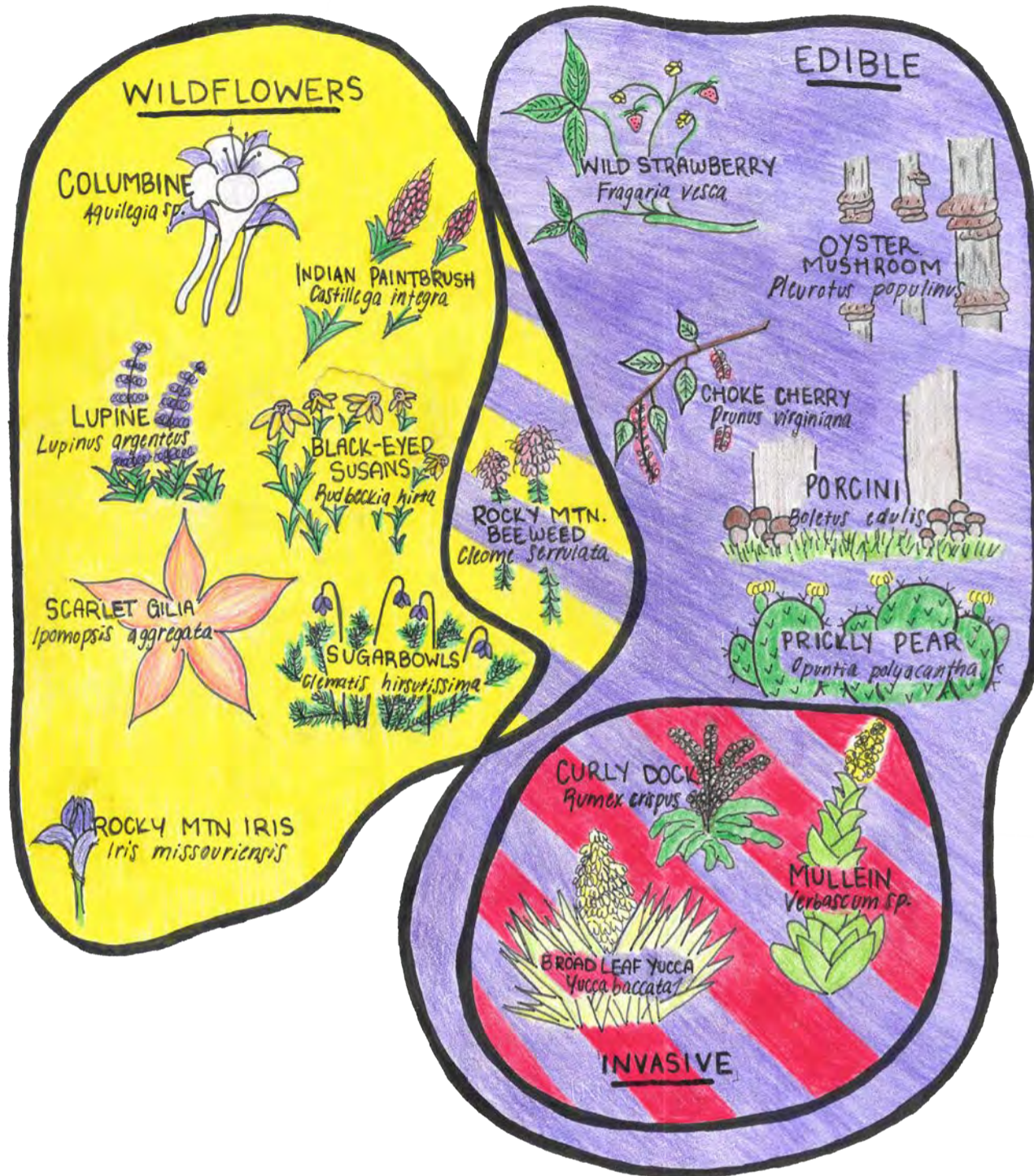
### Key

▲ LEAFY GREENS	● BRASSICA
● SWEET POTATO	● TOMATO
▼ ROOTS	■ WINTER SQUASH
3 3 SISTERS	● LEGUMES

# Flora of Mission: Wolf

Mission: Wolf was designed as a refuge for wolves, but we are also a nature preserve that creates a home for an incredible diversity of wild plant species. Here are just a few of the plants that make our landscape so beautiful.

Come visit in the spring, our hills will be blanketed in wildflowers. These flowers are beautiful, but they also help keep our bees, butterflies, and hummingbirds healthy.



Mission: Wolf is home to a variety of edible plants! These plants can bring interesting new flavors into our diets and provide a variety of health benefits.

We also have several plant species that were introduced from elsewhere. Our herbivores don't like to eat these plants and they outcompete native plants that our ecosystem needs, so we remove them whenever possible.

Text by E. Matsuda, Illustration by K. Wilson

## Land Conservation Update



Fog rolls in at the Ranch (K. Weber)



Sunset from the refuge (M. Haddad)

Even our tiny mountain home is affected by rampant population growth and development; Mission: Wolf aims to protect as much of our surrounding land as possible. Only by preserving this crucial watershed area can we ensure a home for the wolves, wildlife, and flora for generations to come. In the last year, our directors Kent and Tracy have moved to the new property dubbed "The Ranch," which is just around the bend from the sanctuary. We have been able to add 109.5 acres adjacent to the sanctuary and give our directors a beautiful life-long home. This purchase was made possible by a very generous donation. To help us preserve the Wet Mountain Valley for years to come, contact us at 719-859-2157 or [info@missionwolf.org](mailto:info@missionwolf.org). Donations directly to the land conservation program can also be made online at [www.missionwolf.org/donate](http://www.missionwolf.org/donate)

## How to Help: The M:W Wishlist

In-kind donations are a huge help in keeping our daily operations going. Here is a list of items we can use. Please call us if you have questions, or if you would like to ask about our current needs. Thank you for your help! For USPS, our mailing address is: PO Box 1211, Westcliffe, CO 81252. For UPS/FedEx, our mailing address is: 80 Sheep Creek Road, Westcliffe, CO 81252.

### Wolf Care:

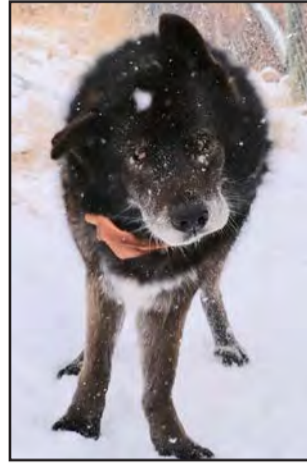
- 5 gallon buckets
- Galvanized water tubs (sizes 10-15, 30-80, or 100-200 gallons)
- Supplements and medications:
  - Vita Pet
  - MSM/Glucosamine
  - Vitamins A, B complex, C, and E
  - Devil's Claw
  - Bravecto chewable flea and tick prevention (Large and XL)
  - TriHeart Plus chewable heartworm prevention (Large)
  - Vetericyn
  - General antibiotics
  - Rimadyl or Novox
- High quality butcher knives (non-serrated)
- Kibble (Wellness Core Original Formula and Wellness Limited Ingredient Lamb & Oatmeal)
- Fruits (watermelon, bananas, and blueberries)
- Wolf food (raw meat, no pork or salt/spices)

### Construction:

- Concrete block
- Flagstone and brick pavers
- Rebar, sheet metal, angle iron, etc.
- 2" diameter steel poles (10')
- Chain link fence (9 ga., 8' tall; 11 ga., 4' tall)
- Fencing tools and materials (fencing pliers, hog rings, fencing staples, tie wire, etc.)
- 2" x 4" steel horse panel (16' x 48", 4 ga.)
- Lumber, treated or untreated (warped wood is fine)
- Hardwood flooring
- Log poles (especially lodgepole pine)
- Drywall, spackle, and drywall tools

### Sustainability:

- Potting soil or seed-starting mix
- Vegetable and native plant seeds
- Solar panels and batteries (contact us first)
- Solar-powered lights
- Solar cooker/oven
- Veggie oil converted vehicles
- Reusable produce bags



Talon shakes off the snow (E. Matsuda)

### Tools:

- Garden hose (¾ inch) and hose repair parts (splitters, couplings, valves, etc.)
- Hand tools (shovels, rakes, pickaxes, etc.)
- Ryobi battery-powered tools (drills, saws, sanders, flashlights, etc.)
- Welding rods (all sizes)
- Air compressor
- Large flatbed trailer
- 4WD trucks
- Lathe
- Pipe bender

### Office:

- Ballpoint pens
- Dry erase markers
- Scissors
- Permanent markers
- Postage stamps (old stamps work, too)
- Manila envelopes (9" x 12")
- #10 and #6¼ mailing envelopes
- Printer ink & toner (Brother TN-336, HP 61XL)
- Printer paper

### Volunteers:

- Sustainable (Green) Toiletries (septic-safe liquid hand soap, body wash, and shampoo; deodorant; toothbrushes; toothpaste; feminine products, etc.)
- Mattresses, futons, foam pads, pillows
- Dr. Bronner's products
- Blue Dawn dish soap
- Simple Green all-purpose cleaner
- Environmentally-friendly laundry detergent
- Cleaning supplies (scrub brushes, steel wool)
- Bulk toilet paper
- First aid supplies (bandaids, ibuprofen, antiseptic and antibacterial, etc.)
- Sleeping bags
- Headlamps
- Winter appropriate boots, hats, gloves, socks, etc.
- Trash bags (especially 13-gallon tall kitchen and 55-gallon contractor bags)

### Horse Care:

- Clean grass hay and supplies (hay trailer, tarps, straps, and shed)
- Grain buckets
- Horse trailer
- 4' tall graduated field fence (12 ½ and 14 ga.)
- T-posts and materials for new horse barn
- Round pen panels

## Did You Know?

For the first time, Colorado residents have an opportunity to donate all or a portion of their tax refund to a non-profit of their choosing. This is an exciting new opportunity to support wildlife conservation, experiential education, and the lifelong care of rescued wolves and wolf-dogs here at Mission: Wolf. You can denote this when filing taxes, and you will need Mission: Wolf's registration number. Visit [refundwhatmatters.org](http://refundwhatmatters.org) to learn more. Mission: Wolf registration number: **20083014033**

## Living Legacies

Mission: Wolf has survived over the years through very generous support from our donors all over the world; some of these people have even willed parts of their estates to help care for the wolves. If you are interested in conserving natural land and caring for captive-born wolves and wolf-dogs for generations to come by establishing a living legacy, please contact us at [info@missionwolf.org](mailto:info@missionwolf.org) or 719-859-2157.

### Eugene Principe



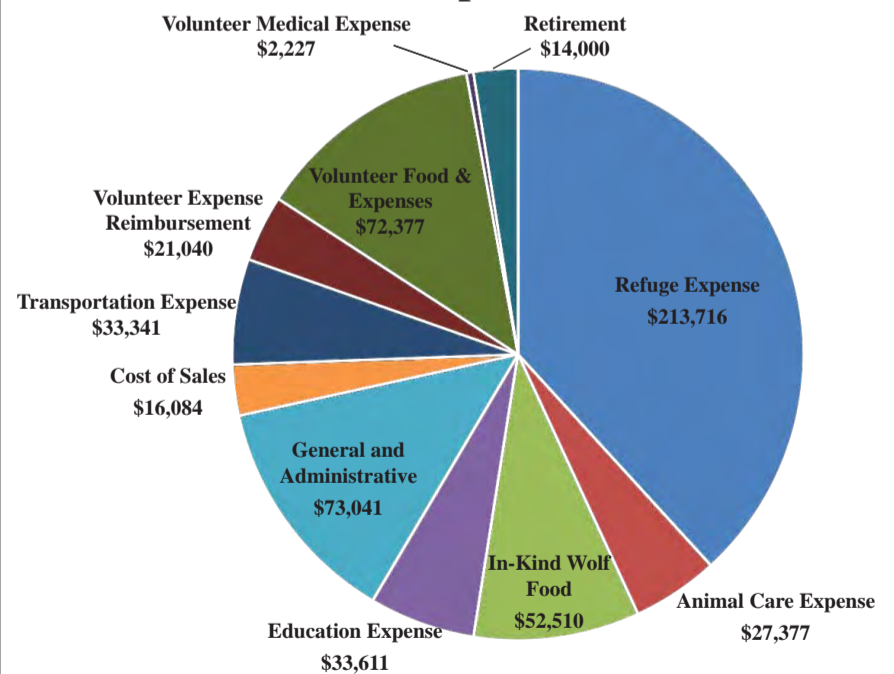
Eugene Principe lived in New York City and was a kind, loving, gentle, and generous person. He dedicated his time to helping both animals and humans who were less fortunate. He was even nominated for Volunteer of the Year by the Mayor's office of New York.

After Eugene passed away in

2001, his estate provided the seed money for Mission: Wolf's Education Endowment Fund. Gene's Kitchen was constructed in his honor and has provided countless staff with a warm and comfortable cooking space. In addition, Gene's Playpen above the refuge provides an expansive space for wolves to run and play without fences in sight. He will be forever remembered at Mission: Wolf; thank you, Gene, for all you give to the wolves!

## Financial Report for Fiscal Year

### 2018 Expenses



Total Expenses: \$559,324

Mission: Wolf is a 501(c)(3) non-profit organization that has been open to the public free of charge for three decades. Our goal is to operate the sanctuary and educational programs in the simplest and most efficient manner, and to keep overhead costs to an absolute minimum. Still, it takes money to pay for transportation, supplies, land acquisition, and insurance. All profit goes toward reducing our land debt. We want to extend a heartfelt thank you to Nancy, our bookkeeper at Sangre Solutions.

# Mimicry in the Wild Coloring Page

It's the annual M:W coloring contest! Flex your creative muscles by decorating this original design any way you see fit. The contest is open to all ages, and a winner will be chosen in each of these three categories: Most Creative, Most Intricate, and Judges' Favorite. Winners selected by the staff at Mission: Wolf will receive a Caretaker Packet for a wolf of your choosing, and an authentic wolf fur bracelet!

**Submission Deadline:**  
**July 31, 2020**

**Winners will be notified by:**  
**August 15, 2020**

Please submit your best work to:  
Mission: Wolf  
PO Box 1211  
Westcliffe, CO 81252

Name: \_\_\_\_\_

Phone: \_\_\_\_\_

Email: \_\_\_\_\_

Address: \_\_\_\_\_



Ned Ludd (depicted above) was a Mission: Wolf resident from 1995 to 2008. The Owl Butterfly (scientific name: *Caligo martia*) has large eye spots resembling owl eyes on their wings. This appears to serve as a protection against predators in the wild.

Artwork and text by Tracy Ane Brooks

**Assistants and Volunteers:** Builder Bob, Norm & Marlena Hanne, Paul Ross (aka Chainsaw Paul), Aaron Young, Hailey Adams, Jeff Wagner, Kathy Bennett, Jason McMullen, Alera Visconti, Lydia Jones, Mike Lydon, John Keller, Adam Prouty, Justice Bratcher, Donny Trevino, Kelly Telfer, Kris Telfer, Elisa Behzadi, Josh Lyles, Emma Gretter, Justin Heriot, Rachel Harvey, Lauren Petrie, Madison Clement, Sven Dijkstra, Larisa Hohenboken, Sky Christina, Rachel Saker, Travis Koch, Marcie Runnels & Family, Sheri Brown & Family, Kate Leaf & Danny, Wesley Liikane, Indigo Crockett, Semilla, Joyce Tran, Beathan Andersen, Lizzy Adamson, Anisa Heins, Caitie Hicks, Ann Drucker, Nico Drucker, Julia Lyons, Pearl Haddad, Eliot Hartley, Daniel Medeiros, Madison Creasy, Camilla Ffrench, Eve Wening, Ricky Lee, Spencer Blackmon, Lewis Shore, Levy Ho-Tai, Vaughn Ramsey, Nelson Family, Shiloh Mortimor, Garrith Peterson, Julie Commis, Logan Pickrell, Karin Teague, Elliot Teague, Sarah Teague, Melissa Hayakawa, Laura Page, Laney Page, Birgitte Dodd, Russell Scott, Kelly Dellinger, Mikhael Star, Erin Kelby, Lazarus Kauffman, Dave Washko & family, Sage Artemisia, Justin Hatfield, John Wells, Angela Payton, Deepali Gaitonde, Anand Lakshmikumar, Alyssa Glover, Alyson Singer, Laura Pavlovic, Shannon Hall, Luke Kaneb, Tim Ferriss, Paul Leim, Matt Gisriel, Curt Koesyer, Karen Croskell, Megan Lujan, Alex Mercer, Aunofu Vakalahi, Nora Maloney, Kip Larsen, Lindsay Hancock, Mike Zawelsky, Laura Beshilas & Friends, Chad Elsner & Group, Ethan Peters & Group, Gordan James & Group, Sean Bennett, Django Allegretti, Antonina Clarke, Benedict Derrickson, Zac Cohen, Josef De Bord & Family, Jess Frye, Rio Duran, Mona Houcheime, Blaise Yafcak, Roxanne VonHove, Beate Pietzsch, Ludwig Pietzsch, Katherine Zesiger, Hans Dijkstra, Desiree Dijkstra, Casper Dijkstra, Rachel Myers, Gabby Thorpe, Reed Williams, Shona Dakota, Dakota Isaak, Pete Marville, Sophie Seidel, Aelin Mayer, Zoe Smallwood, Gabe Sherman, Chris Mefford, Jesse Whitsett, Stewart Whitsett, Rachel Livingston, Greg Chestnut, Mark Langanke, Hayden Langanke, Emily Anne, Anisa Heinz, Josephine Rodgers, Amanda Kuhfaul, Christy Houston, David Scott, Carol Kennedy, Maria Abrams, Kailani Clarke, Von Ramsey, Reese Zavala, Tyler McKee, Ford Church, Jenny Thompson, Ruben Matell, Matt Tucker, Karl Voll, Aro Roseman, Anna Cooke, Montie Pons-Benedict, Max Dijkstra, Justine Robles, Taylor Reynolds, Jadelys Tonos, Nick Shrewsbury, David Lockhart, Heidi Lockhart, Cesar Gellido, CJ Munro, and Susan Sidell.

**Volunteer Groups:** The Road Less Traveled (5280 & Call of the Wild), Service Civil International, Rice University, United World College USA, The Calkin Family, Kansas University, Northwestern University ASB, Northwestern University Project Pause, Colorado University-Boulder, Girls Athletic Leadership School, Doral Academy, Cottonwood Institute, Daniel C. Oakes High School, Carbondale Community School, UT Outdoor, Bear Busters, Telluride Academy, Nature & Wildlife Discovery Center, Boulder Valley ICO, Jaywalker Lodge, Eagle Rock School, Colorado Outward Bound School, Cottonwood Institute, JCC Ranch Camp, Trailblazers 4H Club, Let's Explore Colorado, Colorado College, Women Rising Wild, Rocky Mountain School of Expeditionary Learning, Country Strong Teens, On Belay Mentoring, Horizons, AIM house, Americorps, Bamidbar Wilderness Therapy, Joan Farley Academy, Lake County High School, Teens Inc., Cottonwood: Strive Sunnyside, Craver Middle School, Sangre de Cristo Center for Youth, Pueblo Community College Southwest Campus, Roaming Colorado and Beyond, Pike Peak Community College, The Spoons, Western Colorado University, Third Way Center, Centennial High School, Colorado College Break Out, RC, Colorado Springs School.  
Girl Scout Troops: 4189, 42463  
Boy Scout Troops: 685, 47, 989, 361, 737

**Generous Local Support:** Allen & Lisa Avery, Allison & Chris Sable, Elevation Meat Market, United Business Bank, Challenger Electric, the Sangre Art Guild & 3rd Street Art Gallery, Valley Ace Hardware Store, Chappy's Bar & Grill, Jane & Sunflower Natural Foods, Four Kings, Hunger Busters, Silver Cliff Mountain Inn, Westcliffe Supermarket, Westcliffe Petroleum, Gary Taylor & 91.7 KLZR, Cliff Lanes Bowling Alley & Rancher's Roost Cafe, Sangre Home Decor & Coffee Shop, Sugar & Spice Mountain Bakery, Sean & West Custer County Public Library, the Courtyard Country Inn, the Westcliffe Inn, Westcliffe & Silver Cliff Post Office, Valley Feeds, Westcliffe NAPA, Oak Disposal, Custer County Schools, Cole McCollum, Lia Coleman, Gardner Elementary School, Nancy & Jerry at Sangre Solutions, Crestone Graphics, the Wet Mountain Tribune, Custer County Chamber of Commerce, High Peaks Animal Hospital, the Wet Mountain Valley Community Foundation, The Daily Perks, La Plaza Inn, Dundee Memorial Dog Park, Trails West Trading Co., Growing Spaces, Rye Elementary School, Sandy Dolak, La Veta Public Library, the Huajatolla Heritage Festival, John C. Fremont Library, Amy Martin & the Pueblo Rawlings Library, the McClelland School, Lathrop State Park, Nature & Raptor Center of Pueblo, John Mall High School, the Mountain Mail, Solar Solutions, Colorado Wolf & Wildlife Center, Paula Woerner & Wolfwood Refuge, Pueblo Animal Emergency Hospital, Paint Stain & Stucco, Clear Glass, SustainAbility Recycling, Fine Line Graphics, Colorado Gives & the Community First Foundation, Outdoor Buddies & Wounded Warrior Project, the Ezulwini Foundation, Stan & Bill Stiffler, Richard Miller, Pam & Wolf Edwards, Dr. Koh at Powers Pet Emergency, Wayne McGee & Skyla & Allie, Dr. David Glover & Belcrest Animal Clinic, Paul Biron, Dr. Davis, Dr. Julie Sperry & Cliffes Veterinary Clinic, Ron & Beatknick Auto, Karen & Trey Croskell, Adele Rose, Audrey & Dick Stermer, Paul & Linda Schutt, Jason Stewart, Alicia & Jake Shy, Joshua & Erika Wofford, Erin Farrow & Lake County High School, Shirley Nickerson, Joe Solano, Gil Vasquez, Hannah Crawford, Willie Britt & family, Eric King, Heather Whitlock, John Johnson, Luke George, Bruce Medina, Pat Neverdahl, Wendy Rusk, Rebecca Harnish, Jim & Claudia Cole, Mark & Doris Dembosky, Phoenix Rising, Bonnie Rose, Nancy Joroff, Kathy Reese, Mike & Lisa Herring, Enos Yoder & family, Bill Tezak, Mike Shields & family, Jennifer & Steve Macoskey, David & Amy Shepard, Bill & Sallie Stout, Alicia Waugh, Bob & Carol Allison, Mitch Campbell, Nequette Drilling, Greg Curtis & family, the Sanders Family, Birgit Burglechner, Kay Ingram, Kris & Michael Gates, Lexus of Colorado Springs, Royal Gorge RV, Big O Tires of Canon City, Neil Peachy, Southern Colorado Cold Storage, Bob Fulton, Cross Creek Equine, the Wilson Family, Bob and Kay Parker, and friends & neighbors of Centennial Ranch & Aspen Mountain Ranch.

# Thank You

**Mission: Wolf Staff:**  
Mike Gaarde, Tricia LePore, Dax Morfin, Kacey Wilson, Laura McGehee, Eric Alvarado, Camille Potts, Jordan Goodman, Ella Matsuda, Mo Schmidt, John Lemon, Ari Abrams, Sven Dijkstra, Michel Haddad, Chloe Madison, Christian Pietzsch, Austin Hoffman, Alyssia Vallejo, Ryan Faddegon, Maja Pitcairn, Mira Jordan, Charles Mandemaker, Jake Menzies, Pele Cannon, Megan Wolf, Mateo Fertig, AJ Senseman, Reed Williams, Cliff Kuhn-Lloyd, Red Freeman, Misha Brindlepup, Darien Ash



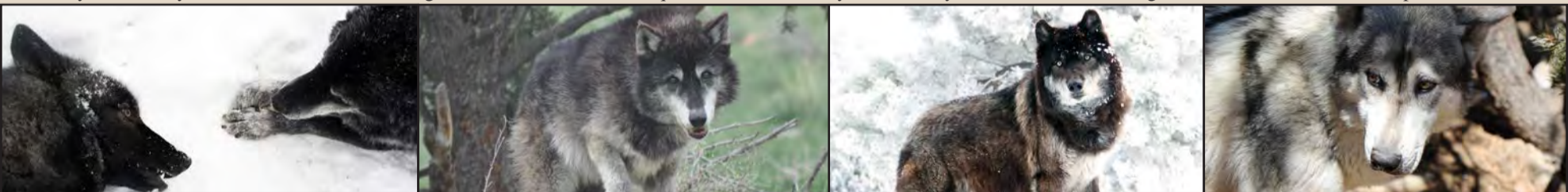
Buku (right) & Oreo are thankful for kibble!

**Board of Directors:**  
Tara Ash, Matt Ash, Tracy Ane Brooks, Kent Weber, Tamas Christman, Julie Kreutzer, David Kreutzer, Jeff Schwartz, Randy Woods, and Sarah Woods.

**In Memory:**  
Wolf Angel Jane, Katy Flanagan, Erin Ruecklies, Mary Lou Church, Donna Nives

**Caretakers and Educators:** Ed Krainak, Karen Mines, Michael Scheimann, the Fred & Donna Nives Foundation, Nora Maloney, David & Jean Farnelo, Sander & Deb Orent, Anita Keefe & the Alpha Omega Foundation, the Guy B. Reno Foundation, Michael Gardner, Dara Garretson, Dell and Dixon Brooke, the Jocarno Family Fund, the Van Beuren Family, the Stephens Family Foundation, Mo Sparks, Rosemarie Sweeney & family, Paul & Darcee Jacob, Linda & Kirk Coonley, Hannah Snyder, the Douglas E. Mitchell Charitable Fund, Blake Facente, Paul Jacob, Connie Emmerson, Rhonda Cleland, Bonnie Yurkanin, Richard & Debbie Keefe, Alan & Sally Bailey, Ann & Truly Collins, Sandy Stanley, Dave Nora & Peggy Kavookjian, Alexander Gramm, Sheri Price, Patricia Walker, Rebecca Gray, David Warren, Torger Anderson, Joan Thompson, Ralph Marzulla, Karen & William Snyder, Joan Silaco, the Red Empress Foundation, the Gardner Foundation, Alice Victor, Nona Hattan, Nathan Varley & Linda Thurston, Steven & Cynthia Magidson, Wayne Cadden, Bev McGehee, the Footbridge Foundation, Inge Lauwers, Cynthia Houston, Susan Gardner, Kenneth Olivier & Angela Nomellini, Richard & Linda Clark, Norman Williams, Monica Glickman, Steven Sledziona, Virginia Redman, the Bielawski Family Fund, Gay Davis Miller, Ralph Noistering, Barry & Lee Fisher, Deborah Spring, Dan & Millie Matlock, Irene Lorusso, Rebecca Bayang, Charles Landrum, Julie Welte, Craig Weaver, Joshua Johnson, Lewis Coonley, Suzanne Westgaard, Stephanie Burt, Donna Heyse, Cliff & Pam Wren, Bonnie Boex, Mark & Carol Rickman, Pearl Gosnell, Thomas Funkhouser, the Huydic Family, Susan Lin, Alexis Pyatt, Linda Giers, Anita Littlewolf, Elaine Shields, Peter Meisler, Pierre Schlemel, John & Judith Rinas, Karl Hemmerich, Nancy Vanderhoeven, Barry & Erin Sharaf, Anne Turyn, Linda Beilstein, Sharon Martel, Brian Blackman, Nancy Turnbull, Dot's Diner, Cathie Gagnon, Cynthia Wayburn, Priscilla Seimer, Marjorie & James Penrod, Jack Longo, Kelley Brockmeyer, the Ted Gorski Trust, Joyce Comin & Wini Milby, Sal Bellofatto, Robert Poole, Irene Becker, Tom & Susan Luchka, Bob & Pam Troyer, Elspeth Baillie, Carolyn Buongiorno, Bill & Edna Gaarde, Kirk Scott, Tina Winzent, Richard Clark, Lauryn & Curt Eisenhower, Lucy Coleman & Lydia Lee, Amy McCarthy, John Orth, Rebecca & George Rose, the Abel Family, Kay Ledyard, Sandy Buckner, Marie Amicucci, Peter Fahrenwald, Chris Ross, Fay Forman, John Kearns, Thomas & Mary-Lynn Foreman, Steve & Becky Andrews, Ralph & Donna Hood, Tamara Atkin, Bradley Kay, Friends of Horses, Safe Landing Horse Rescue, Carol Martinez, Nelson Brooke & family, Susan Menz, Darin Potts, Seiichi Matsuda & Bonnie Bartel, John & Deb Mitchell, Betty Stanley, Cathy Snow, Alan Hirsch, Arthur & Carrel Pickoff, Sharon Martel, Karen Bramer, Walter & Els Van Woudenburg, Susan Menz, Deborah & Bill Gaarde, John Peleaux, Marie Amicucci, Neil & Diane Swan, Mike & Carol Finn, Betsy & Newell Woodbury, Wes & Nancy Taylor, Vicki Boesel, John & Gail Genovese, John & Judith Stovall, Watson Land Co., Steven Linderer, Leslie & Don Caldwell, Joan & Tom Rauch, Ray & Betty Garber, Marty Wolff, Bill & Sallie Stout, Christine Swank, Elizabeth Cole, Paul & Jaclyn Creadon, Herbert Kober, Dan Fischer, Randy & Sarah Woods, Peggi Collins, Claudia Cole, Greg & Karen Shattuck, Ann & Dwaine Robey, Melanie Brisbon-Lindsey, Todd H., Buzz Inderdahl, Peter & Donna Sharpe, Gail Terry, Patrick & Susan Nichols, Larry Trilling, Jim Bradburn, Elliot Jackson, Hugh Leney, Mike & Joanie Liebman, Julie Gaylord, James Qualey, Thomas & Denise Shepard, Mark & Doris Dembosky, Elizabeth Fuls, Jackson Immuno Research Labs, Wolf Teacher Pam Brown, Jeff Harvey, and Dr. Jeff & the Rocky Mtn. Vet Crew.

**Business Friends:** Deb Gaarde & Legacy Custom Embroidery, Jim Morris Environmental T-Shirt Co., Hilary & Tamas & Dragonfly Coffee Roasters, Andy & Photography by Noel, White House Custom Colour, Doggy Doors, Pacific Domes, SolaRight, Bomb Footbags, JVS Graphics, Metro Solar, Provider's Resource Clearing House, Cuddles and Curly, and Droneworld.



From left to right: Ydun & Minigan (E. Alvarado), Fenris (D. Morfin), Arrow (D. Morfin), Flash (K. Weber)

# Caretaker of the Year

## Jane Moyer

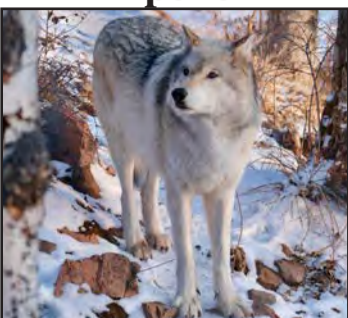
Jane has taken care of Mission: Wolf's food needs for decades. She operates Sunflower Natural Foods, a Westcliffe staple for organic and bulk foods. Mission: Wolf staff delight in visiting her shop to pick up healthy bulk food items for the refuge. Jane helps M:W to accommodate all different kinds of dietary needs and restrictions, so that the staff can stay energized to care for the wolves. A well-fed staff means well-fed wolves! Over the years, M:W staffers have had the pleasure of seeing Jane's bright smile in town on food pick-ups and even hosting her out at the refuge. She has stocked and sold M:W merchandise in town and helped to get the word out about our mission. Thank you, Jane, for all that you provide to M:W and the Wet Mountain Valley Community!

Illustration by J. Goodman



# The Wolves of Mission: Wolf

## Apollo



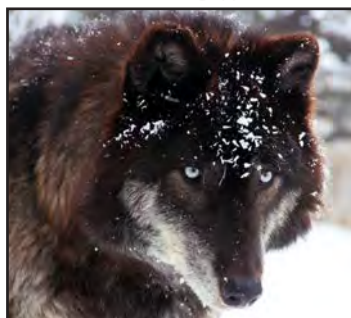
- Wolf-dog; high wolf content
- Lives with Farah
- Calm, cool, and handsome

## Aria



- Arctic wolf
- Lives with Hailey
- Shy, elusive, loves food

## Arrow



- Black-phase Gray wolf
- Lives with Zephir
- Refuses to howl

## Asia



- Pitbull-wolf cross
- Lives with Valley Spirit
- Spunky and acrobatic

## Batman



- Pitbull-wolf cross
- Like his namesake, usually found watching his domain

## Buku



- Pitbull-wolf cross
- Lives with his brother Oreo
- Loves searching for kibble

## Cephira



- Wolf-dog; high wolf content
- Sweet and playful
- Runs laps at dinner time

## Farah



- Black-phase Gray wolf
- Lives with Apollo
- Excitable and rambunctious

## Fenris



- Wolf-dog
- Lives with McKinley
- Aloof and observant

## Flash



- Wolf-dog
- Lives with Saurya
- Playful and loving

## Hailey



- Black-phase Gray wolf
- Lives with Aria
- Often mistaken for a rock when napping

## Illiamna



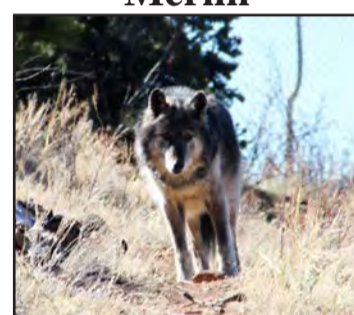
- Arctic wolf
- Most impressive eater
- Goofiest underbite

## McKinley



- Wolf-dog
- Loves Fenris
- Might love her bones more

## Merlin



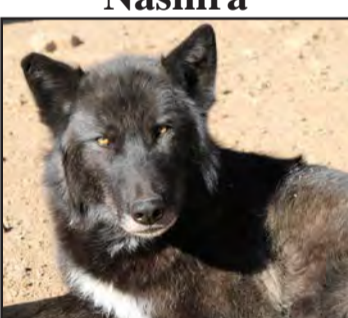
- Wolf-dog
- Newest member of the pack
- Elusive, athletic, and fierce

## Minigan



- Wolf-dog, lives with staff
- Loves long walks
- Quirky heart and soul of the refuge

## Nashira



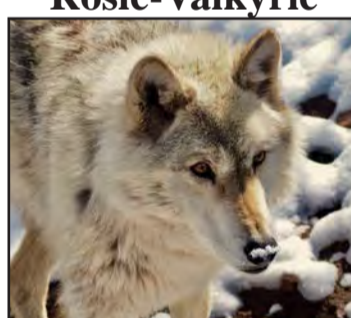
- Wolf-dog
- Lives with Zeab and Ydun
- Reluctantly loving adoptive mother

## Oreo



- Pitbull-wolf cross
- Lives with Buku
- Sweet like his name

## Rosie-Valkyrie



- Timber wolf
- Lives with Tiger
- Passionate about watching the refuge

## Saurya



- Black-phase Gray wolf
- Lives with Flash
- Crafty and cunning

## Soleil



- Wolf-dog
- Oldest M:W resident
- Sassy Silver Snow Queen

## Talon



- Wolf-dog
- Prone to sunny naps
- Cannot wait for breakfast

## Tiger



- Timber wolf
- Lives with Rosie
- Excitedly yowls in the mornings

## Valley Spirit



- Wolf-dog
- Lives with daughter, Asia
- Most athletic animal here

## Ydun



- Black-phase Gray wolf pup
- Lives with Zeab and Nashira
- Most passionate greeter

## Zeab



- Black-phase Gray wolf
- Lives with Nashira and Ydun
- Laidback leader

## Zuko



- Wolf-dog
- Happy and confident leader of the ranch pack

## Zephir



- Arctic wolf
- Lives with Arrow
- Howls enough for both of them

# MISSION: WOLF

Education vs. Extinction

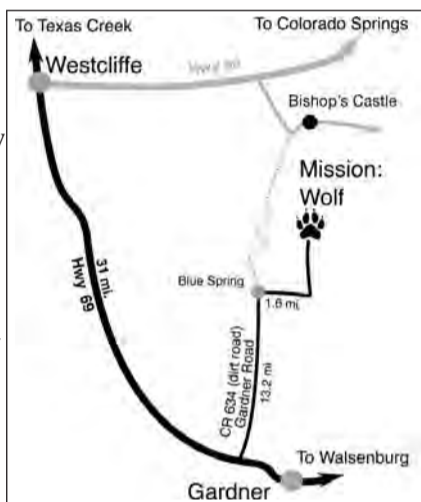
## Visit Us

Visitors who survive the dirt roads are welcome Monday-Wednesday and Friday-Saturday from 9 a.m. to 4 p.m. Thursdays and Sundays are closed to drop-in day visitors. These days are reserved for volunteers who are willing to contribute their time and energy, for at least a few hours, to assist us on current sanctuary projects. Please contact us beforehand if you are interested in this option.

## Driving Directions

**From Westcliffe (coming from the north):** Take Highway 69 south approximately 31 miles and turn left on Gardner Road (County Road 634). Follow this dirt road 13.2 miles, keeping right at two Y intersections in the first 5 miles. At the Blue Spring State Land Trust sign and cattleguard, turn right. Follow the Mission: Wolf driveway 1.6 miles along a fenceline and to the left up the hill to the sanctuary.

*DO NOT USE GPS. Once on the dirt roads, stick to the directions or you may get lost and find yourself on a horse trail.*



Map courtesy of C. Pietzsch

## Contact Us

**Website:** [www.missionwolf.org](http://www.missionwolf.org)  
**Email:** [info@missionwolf.org](mailto:info@missionwolf.org)  
**Phone:** 719-859-2157  
**Mail:** PO Box 1211  
Westcliffe, CO 81252

## Follow Us

 [facebook.com/missionwolfcolorado](https://facebook.com/missionwolfcolorado)  
[facebook.com/wolvesofmissionwolf](https://facebook.com/wolvesofmissionwolf)  
 [@missionwolfsanctuary](https://instagram.com/@missionwolfsanctuary)  
 [youtube.com/missionwolfsanctuary](https://youtube.com/missionwolfsanctuary)



Resident sweethearts Farah (black wolf) and Apollo teach us about non-verbal communication every day (K. Weber)

At Mission: Wolf, we're always trying to be more sustainable. If you'd like to save paper and receive your newsletter digitally, email us at [info@missionwolf.org](mailto:info@missionwolf.org) with your name and address and we'd be happy to take you off our paper mailing list.

## Caretaker Corner

Since the founding of the sanctuary, Mission: Wolf has depended on donations from our supporters and members. With roughly 30 hungry canines to feed, we go through nearly 1,000 pounds of raw meat each week. Your contribution goes directly toward the care of the animals, as well as the education of thousands of visitors. Please consider becoming a member of the Mission: Wolf family today, and help keep the wolves happy, healthy, and well-fed! Wolf membership packets make great gifts for birthdays, holidays, and memorials. You get a tax-deductible receipt, and your friend or loved one receives a wolf membership packet as

a gift from you. Visit [mission-wolf-store.myshopify.com](http://mission-wolf-store.myshopify.com) to order, or use the order form below to sponsor one of the M:W wolves.

### What's Included?

- One year membership to the Wolf Caretaker program
- 8x10 color photo of your chosen wolf
- Your wolf's biography
- Lock of your wolf's naturally shed fur
- Mission: Wolf window decal
- Subscription to the *Wolf Visions* newsletter
- Personalized Membership Certificate



## Feed a Wolf! Become a Caretaker at Mission: Wolf!

(Which wolf would you like to sponsor? (please circle))

Apollo, Aria, Arrow, Asia, Batman, Buku, Cephira, Farah, Fenris, Illiamna, Lil' Hailey Star, McKinley, Merlin, Minigan, Nashira, Oreo, Rosie-Valkyrie, Saurya, Soleil, Talon, Tiger, Valley Spirit, Ydun, Zeab, Zephir, Zuko

Name: \_\_\_\_\_  
Phone: \_\_\_\_\_  
Email: \_\_\_\_\_  
Address: \_\_\_\_\_

\$25 Student/Senior  
 \$40 Individual  
 \$100 Family, Group, or School  
 \$250 Contributor  
 \$500 Patron  
 \$1,000 Feed a Wolf for a Year  
 \$3,000 Feed a Pack for a Year

Please send this form with cash or check to:  
Mission: Wolf  
PO Box 1211  
Westcliffe, CO 81252  
Visit [mission-wolf-store.myshopify.com](http://mission-wolf-store.myshopify.com) for credit card orders